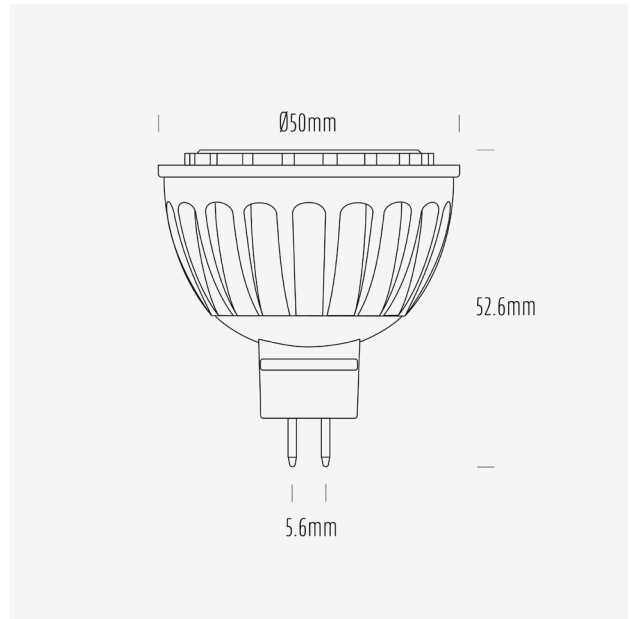


AGL 300 Series

MR16 LED Globes



AGL-300-30X60 / 3000K / MR16 / 60°



Product Data

Product Code	AGL-300-30X60		
Description	Aqualux 300 Series LED Lamp		
Type	MR16 GU5.6		
Construction	Aluminium Heatsink + PMMA Optic		
Warranty	3 Years		

Electrical Data

Input Voltage Range	12~24V AC/DC			
Nominal Voltage	24VDC			
Nominal Power	3W			
Nominal Current	125mA			
Input Voltage	12VDC	12VAC	24VDC	24VAC
Rated Power	3.6	2.9	3.4	3.6
Operating Frequency	-	50Hz	-	50Hz

Max. no. of lamps on AQD24-040	9	-	9	-
Max. no. of lamps on AQD24-100	>22	-	>22	-
Max. no. of lamps on AQD24-240	-	-	-	-

Dimming Compatibility	Non dimming
Wiring Scheme	Parallel
Startup Time	< 0.5s

Mechanical & Thermal Data

Overall Length	52.6mm
Max Diameter	50mm
Lamp Base	GU5.6
Weight	55g
Operating Temp Range	-20° - 45°
IP Rating	IP20

Photometric Data

Nominal Flux (lm)	300			
Input Voltage	12VDC	12VAC	24VDC	24VAC
Input Power (W)	3.6	2.9	3.4	3.6
Rated Flux (lm)	449	353	453	457
Efficacy (lm/W)	125	122	132	126

CCT	3000K
CCT Description	Warm White
CRI (Ra)	82
CRI (R9)	2
TM-30 (Rf)	82
TM-30 (Rg)	97
SDCM	-
Peak Intensity (cd)	356
Nominal Beam Angle	60°
Measured Beam Angle (FWHM)	55°

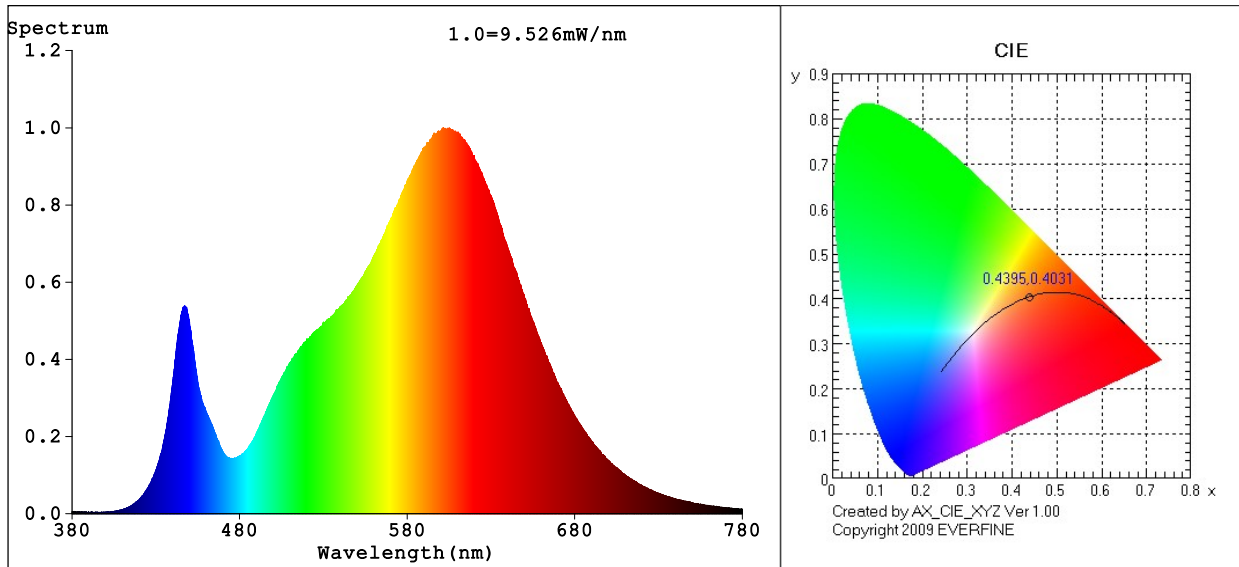
Lifespan Data

L70	15,000h
Switching Cycles	15,000

Compliance Data

EMI	Yes
RCM	N/A
Mercury Content	0mg

Spectrum Test Report



Color Parameters:

Chromaticity Coordinate: $x=0.4395$ $y=0.4031$ / $u'=0.2526$ $v'=0.5214$
 CCT=2950K (Duv=-0.0007) Dominant WL:Ld =583.3nm WL:Lc = --nm Purity=52.9%
 Ratio:R=23.1% G=74.6% B=2.3%; Peak WL:Lp=601.5nm FWHM=123.2nm
 Render Index:Ra=81.6 AvgR=75.7 TM30:Rf=82 Rg=97

R1 =80 R2 =90 R3 =97 R4 =80 R5 =80 R6 =87 R7 =82
 R8 =57 R9 =2 R10=77 R11=80 R12=72 R13=82 R14=99 R15=72

Photo Parameters:

Flux = 456.8 lm Eff. : 126.22 lm/W Fe = 1.375 W

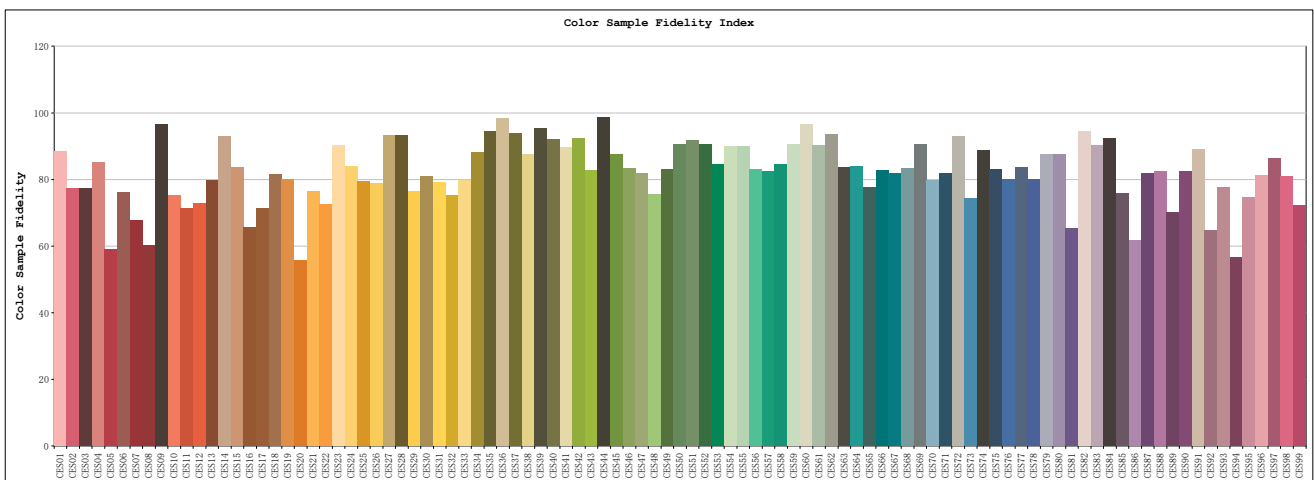
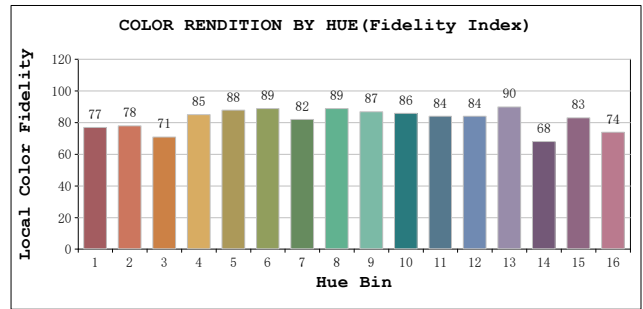
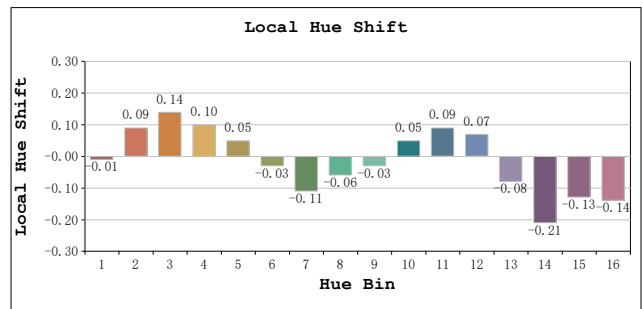
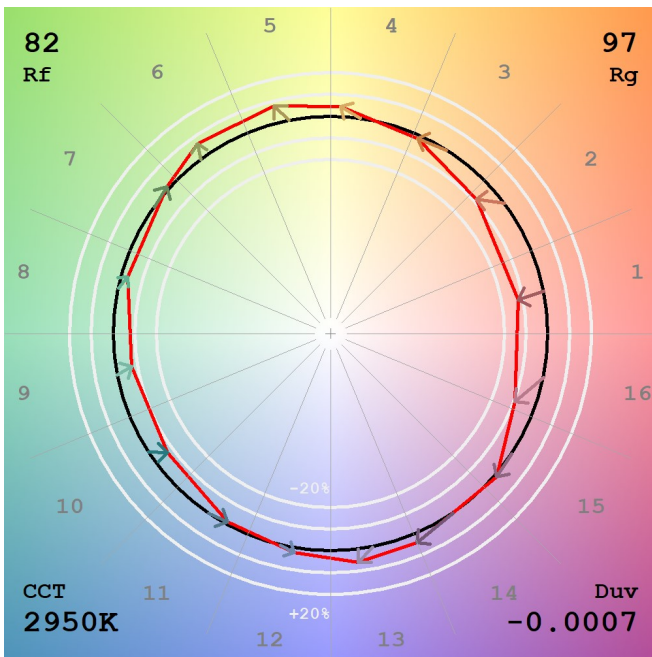
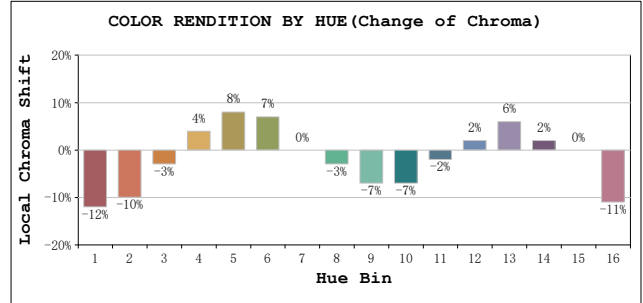
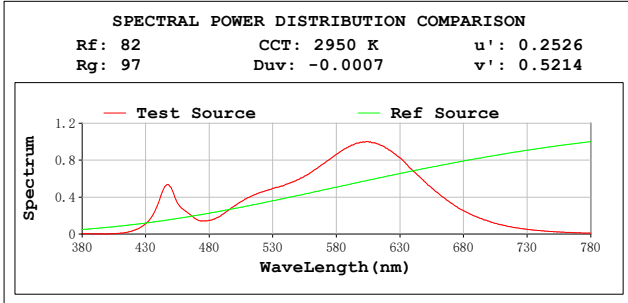
Electrical parameters:

V = 23.961 V I = 0.2333 A P = 3.619 W PF = 0.6474
 LEVEL:OUT WHITE:ANSI_3000K
 Status: Integral T = 320 ms Ip = 53430 (82%)

GBT5702

TM30

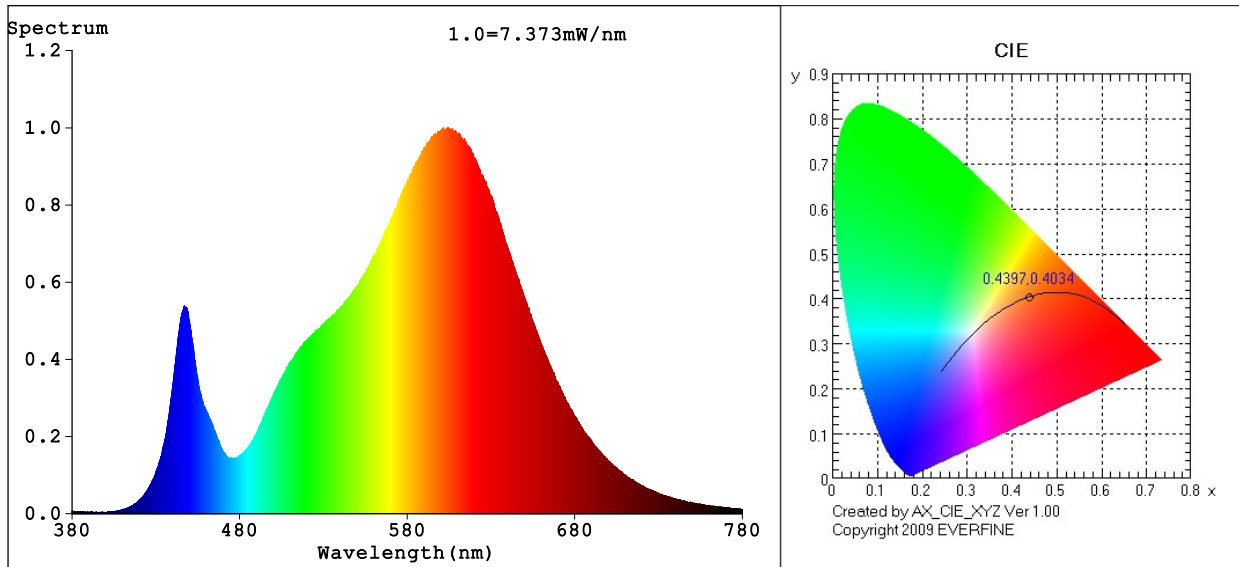
View Angle:2 Deg



Model:AGL-300-30X60
 Tester:NC
 Temperature:25.3Deg
 Manufacturer:AQUALUX

Number:AGL-300-30X60 24VAC
 Date:2023-10-17 16:09:34
 Humidity:65.0%
 Remarks:24VAC

Spectrum Test Report



Color Parameters:

Chromaticity Coordinate: $x=0.4397$ $y=0.4034$ / $u'=0.2527$ $v'=0.5215$
 CCT=2948K (Duv=-0.0007) Dominant WL:Ld =583.3nm WL:Lc = --nm Purity=53.1%
 Ratio:R=23.2% G=74.5% B=2.3% ; Peak WL:Lp=604.4nm FWHM=122.9nm
 Render Index:Ra=81.6 AvgR=75.7 TM30:Rf=82 Rg=97

R1 =80 R2 =90 R3 =97 R4 =80 R5 =80 R6 =88 R7 =82
 R8 =57 R9 =2 R10=77 R11=80 R12=72 R13=82 R14=99 R15=72

Photo Parameters:

Flux = 352.9 lm Eff. : 122.27 lm/W Fe = 1.062 W

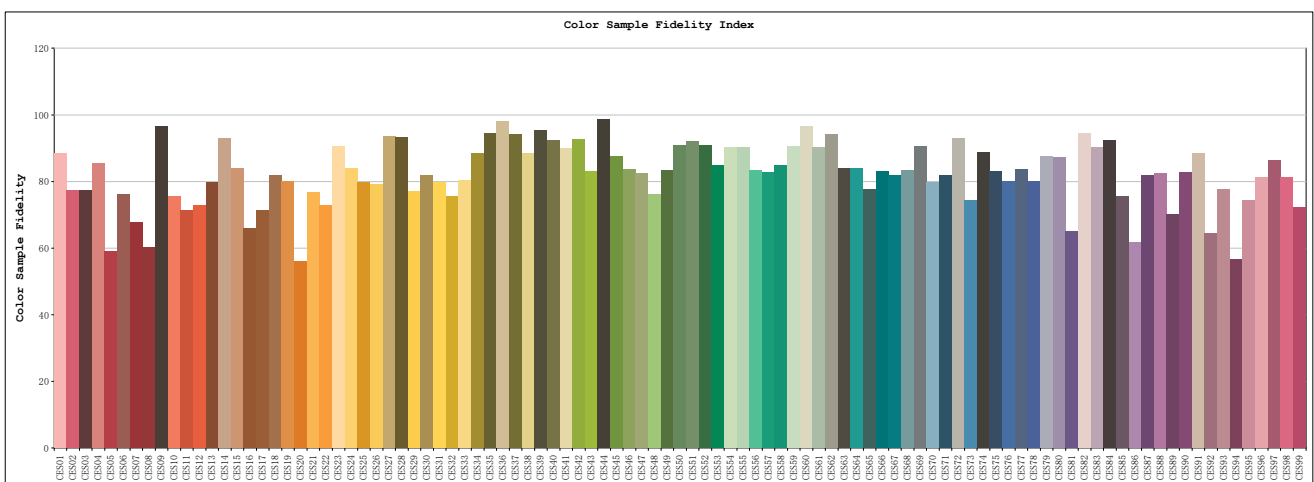
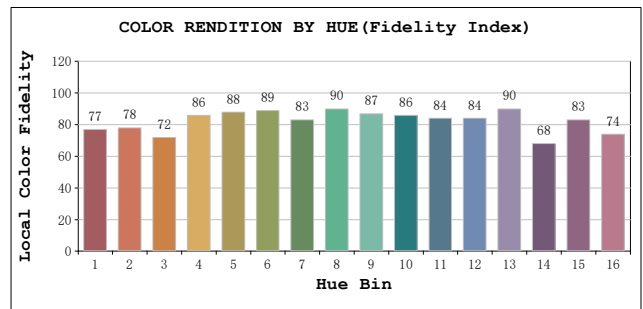
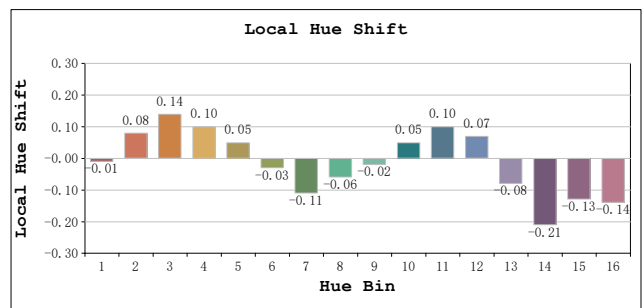
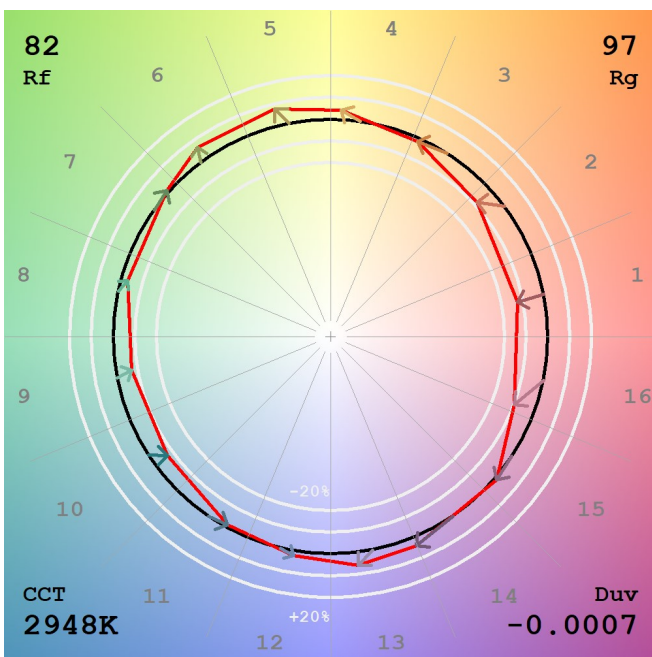
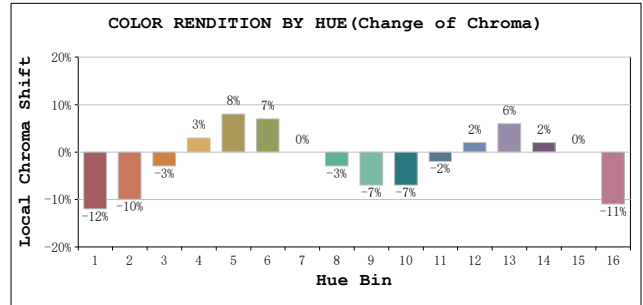
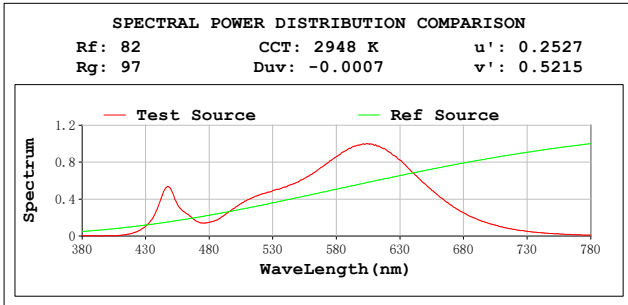
Electrical parameters:

V = 11.991 V I = 0.3251 A P = 2.886 W PF = 0.7403
 LEVEL:OUT WHITE:ANSI_3000K
 Status: Integral T = 320 ms Ip = 41262 (63%)

GBT5702

TM30

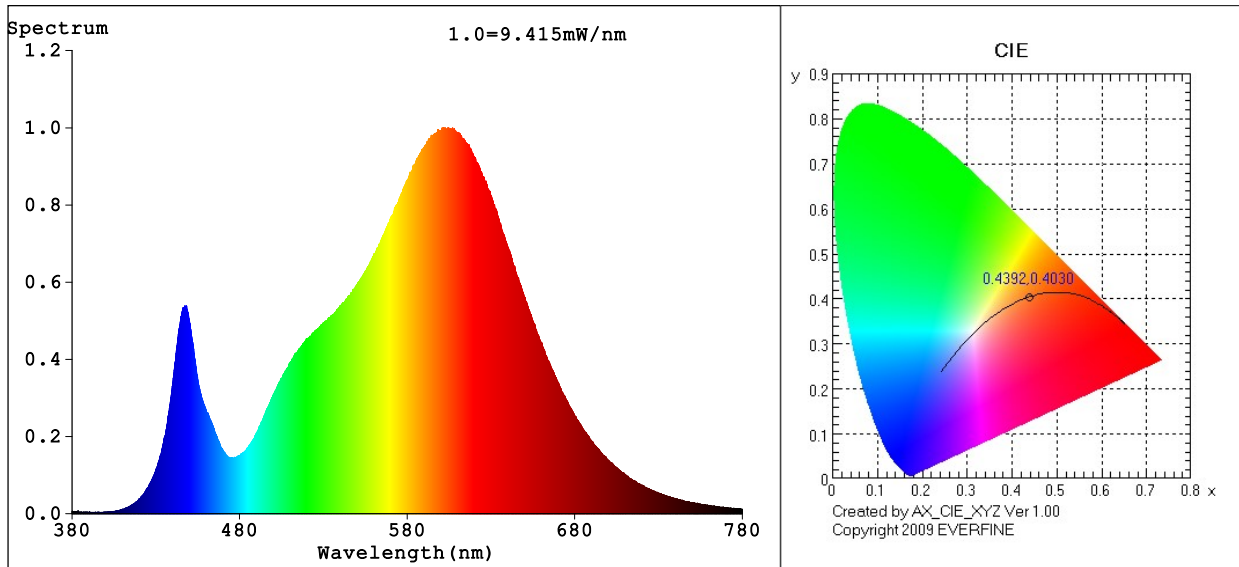
View Angle:2 Deg



Model:AGL-300-30X60
 Tester:NC
 Temperature:25.3Deg
 Manufacturer:AQUALUX

Number:AGL-300-30X60 12VAC
 Date:2023-10-17 16:10:15
 Humidity:65.0%
 Remarks:12VAC

Spectrum Test Report



Color Parameters:

Chromaticity Coordinate: $x=0.4392$ $y=0.4030$ / $u'=0.2525$ $v'=0.5213$
 CCT=2953K (Duv=-0.0007) Dominant WL:Ld =583.3nm WL:Lc = --nm Purity=52.8%
 Ratio:R=23.1% G=74.6% B=2.3%; Peak WL:Lp=601.5nm FWHM=123.4nm
 Render Index:Ra=81.5 AvgR=75.7 TM30:Rf=82 Rg=97

R1 =80 R2 =89 R3 =97 R4 =80 R5 =80 R6 =87 R7 =82
 R8 =57 R9 =2 R10=76 R11=80 R12=72 R13=82 R14=99 R15=72

Photo Parameters:

Flux = 452.9 lm Eff. : 132.28 lm/W Fe = 1.364 W

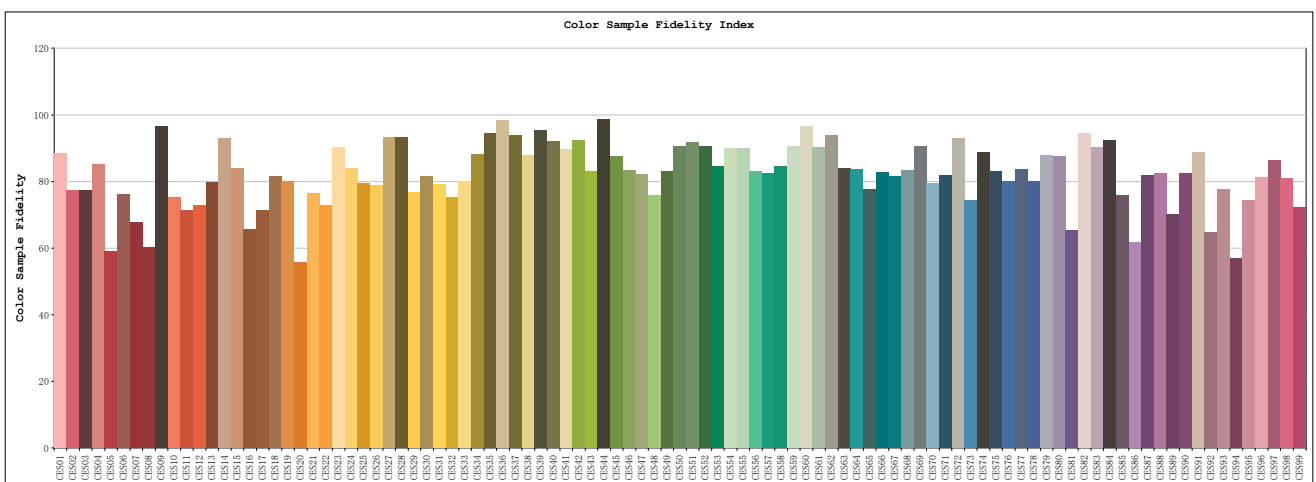
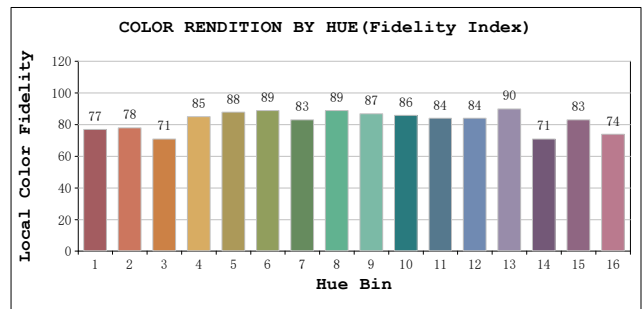
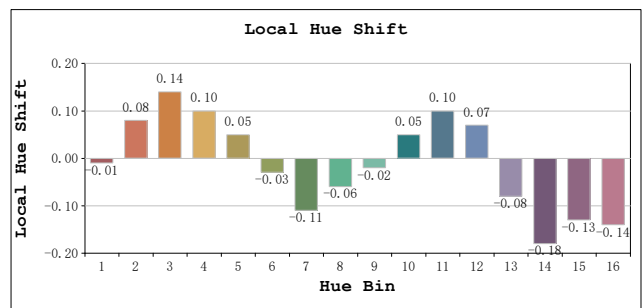
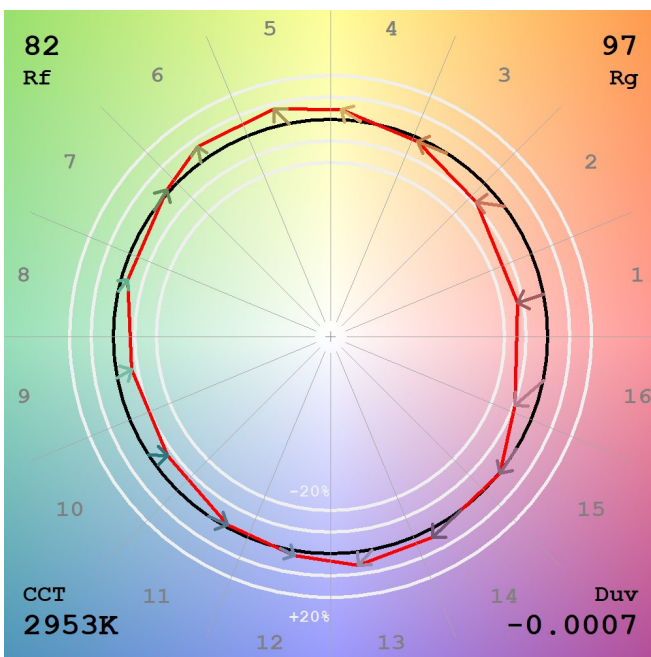
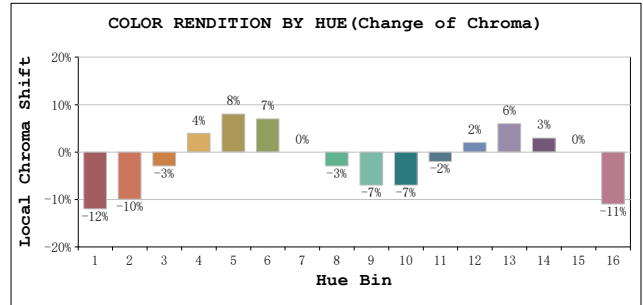
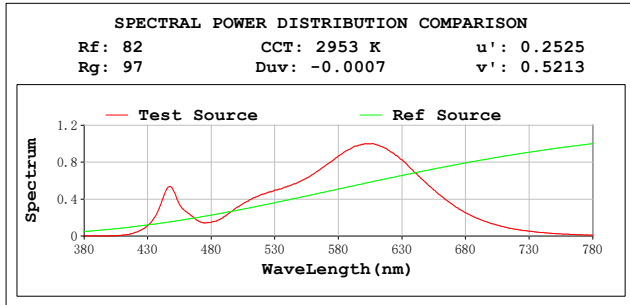
Electrical parameters:

V = 23.989 V I = 0.1427 A P = 3.424 W PF = 1.0000
 LEVEL:OUT WHITE:ANSI_3000K
 Status: Integral T = 320 ms Ip = 52890 (81%)

GBT5702

TM30

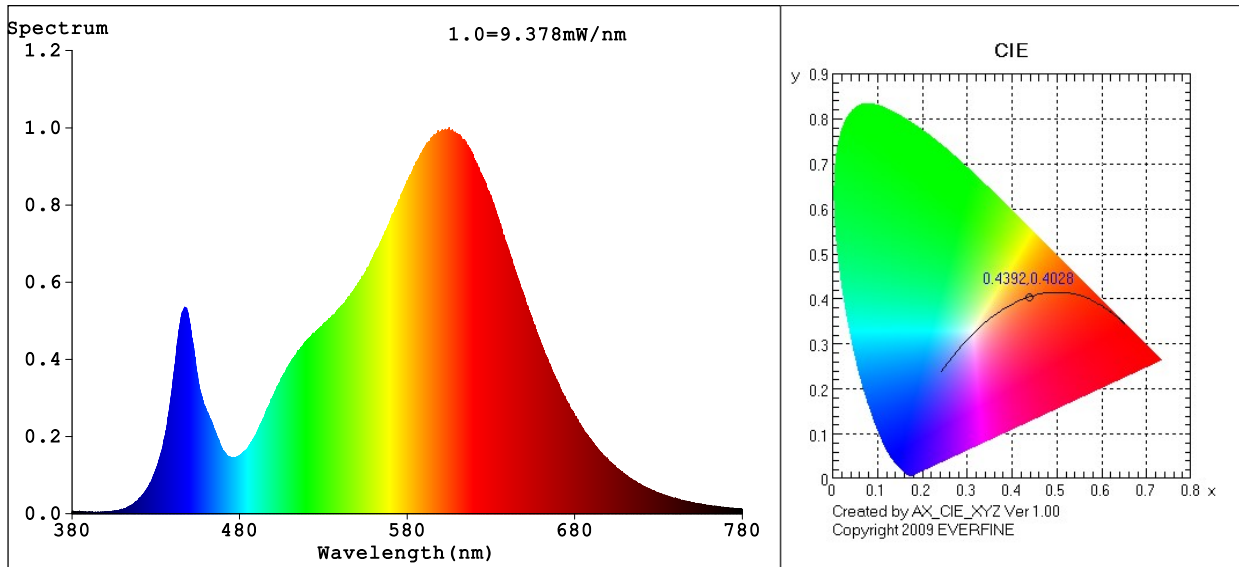
View Angle:2 Deg



Model:AGL-300-30X60
 Tester:NC
 Temperature:25.3Deg
 Manufacturer:AQUALUX

Number:AGL-300-30X60 24VDC
 Date:2023-10-17 16:11:34
 Humidity:65.0%
 Remarks:24VDC

Spectrum Test Report



Color Parameters:

Chromaticity Coordinate: $x=0.4392$ $y=0.4028$ / $u'=0.2526$ $v'=0.5212$
 CCT=2952K (Duv=-0.0008) Dominant WL:Ld =583.3nm WL:Lc = --nm Purity=52.7%
 Ratio:R=23.1% G=74.6% B=2.3%; Peak WL:Lp=605.1nm FWHM=122.6nm
 Render Index:Ra=81.5 AvgR=75.6 TM30:Rf=82 Rg=97

R1 =80 R2 =90 R3 =96 R4 =80 R5 =80 R6 =87 R7 =82
 R8 =57 R9 =2 R10=77 R11=80 R12=72 R13=82 R14=99 R15=72

Photo Parameters:

Flux = 449.0 lm Eff. : 124.91 lm/W Fe = 1.353 W

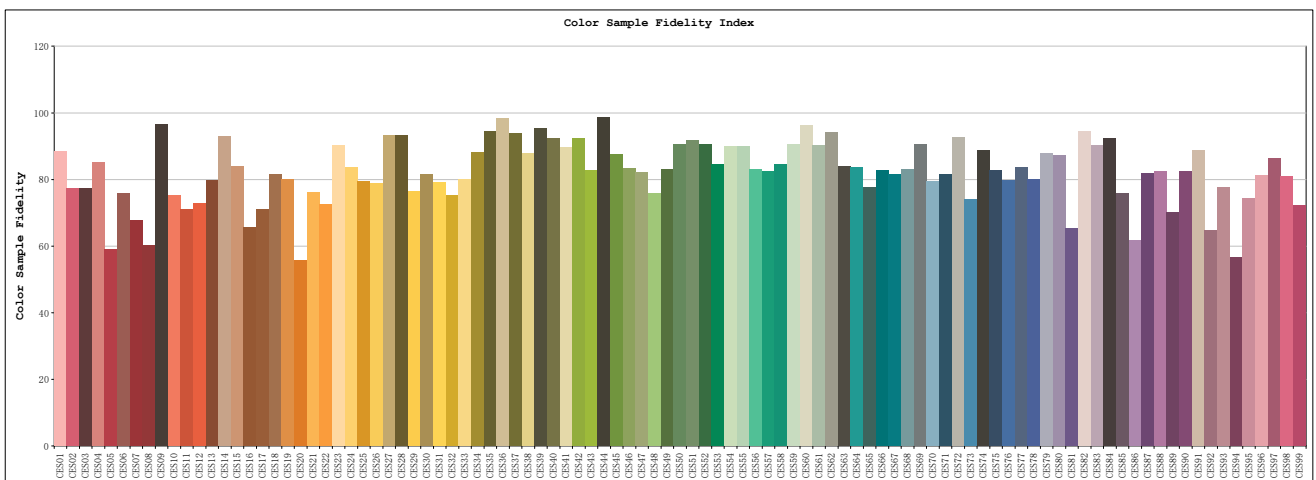
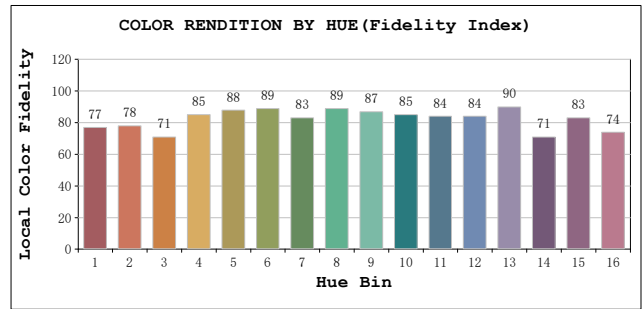
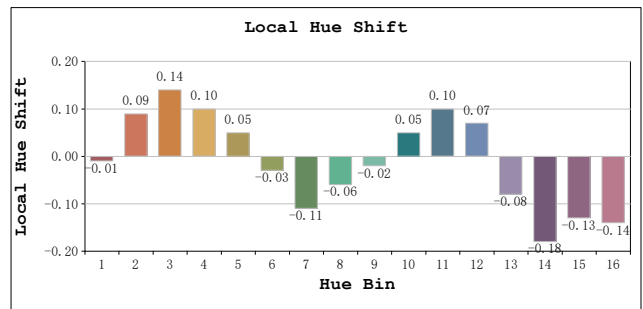
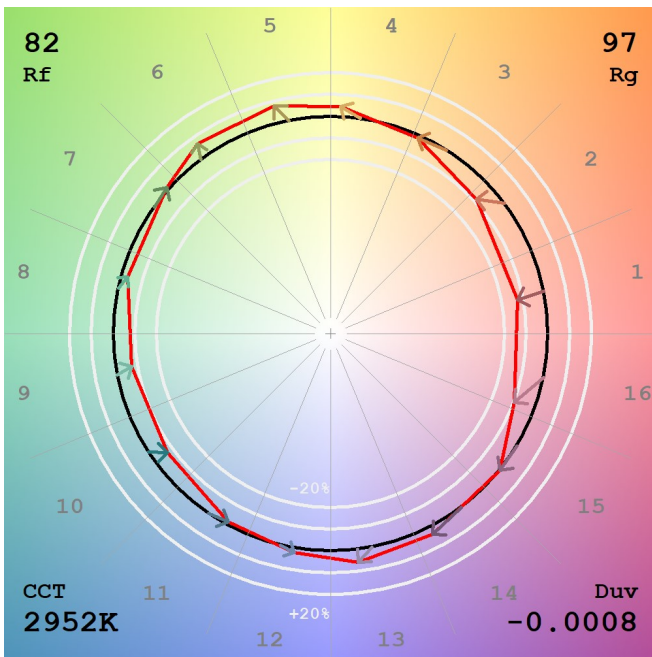
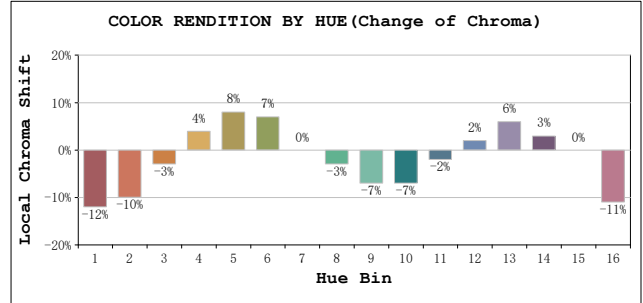
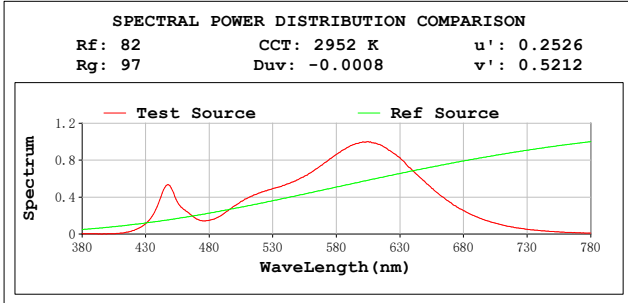
Electrical parameters:

V = 11.971 V I = 0.3002 A P = 3.594 W PF = 1.000
 LEVEL:OUT WHITE:ANSI_3000K
 Status: Integral T = 320 ms Ip = 52386 (80%)

GBT5702

TM30

View Angle:2 Deg



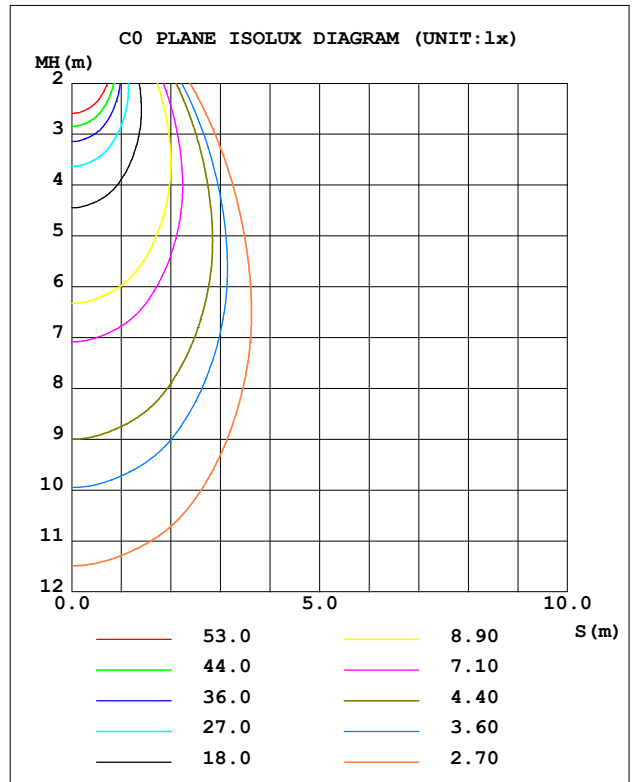
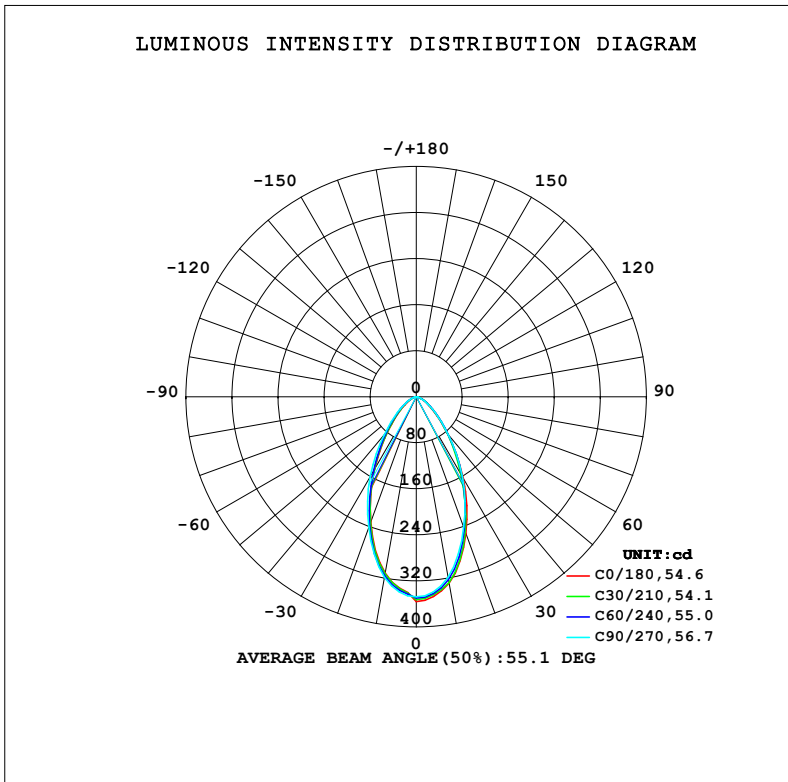
Model:AGL-300-30X60
 Tester:NC
 Temperature:25.3Deg
 Manufacturer:AQUALUX

Number:AGL-300-30X60 12VDC
 Date:2023-10-17 16:12:13
 Humidity:65.0%
 Remarks:12VDC

LUMINAIRE PHOTOMETRIC TEST REPORT

Test:U:23.872V I:0.1389A P:3.3169W PF:1.0000 Freq:0Hz		
UTHDi:0.00% ITHDi:0.00% KDisp:0 Lamp Flux:365.327x1 lm		
NAME: AGL-300-30X60	TYPE: MR16 LAMP	WEIGHT: 100GM
SPEC.: AGL-300-30X60	DIM.: 50MM	SERIAL No.: -
MFR.: AQUALUX	SUR.:	Shielding Angle:

DATA OF LAMP		PHOTOMETRIC DATA			
MODEL	LED	I _{max} (cd)	356.0	S/MH (C0/180)	0.80
NOMINAL POWER (W)	3	LOR (%)	100.0	S/MH (C90/270)	0.83
RATED VOLTAGE (V)	24	TOTAL FLUX (lm)	365.33	η UP, DN (C0-180)	0.0, 50.2
NOMINAL FLUX (lm)	365.327	CIE CLASS	DIRECT	η UP, DN (C180-360)	0.0, 49.8
LAMPS INSIDE	1	η up (%)	0.0	CIBSE SHR NOM	0.75
TEST VOLTAGE (V)	24	η down (%)	100.0	CIBSE SHR MAX	0.85



C Range: 0 - 180DEG
 C Interval: 15.0DEG
 Test Speed: MEDIUM
 Temperature: 20°C
 Operators: NICK
 Test Date: 12 October 2023

γ Range: 0 - 90DEG
 γ Interval: 2.5DEG
 Test System: EVERFINE GO-SPEX500_V1 SYSTEM V2.00.473
 Humidity: 65.0%
 Test Distance: 3.100m [K=1.0000]
 Remarks: AGL-300-30X60
 3W / 3000K / 60D / 300LM

ZONAL FLUX DIAGRAM

ZONAL FLUX DIAGRAM:

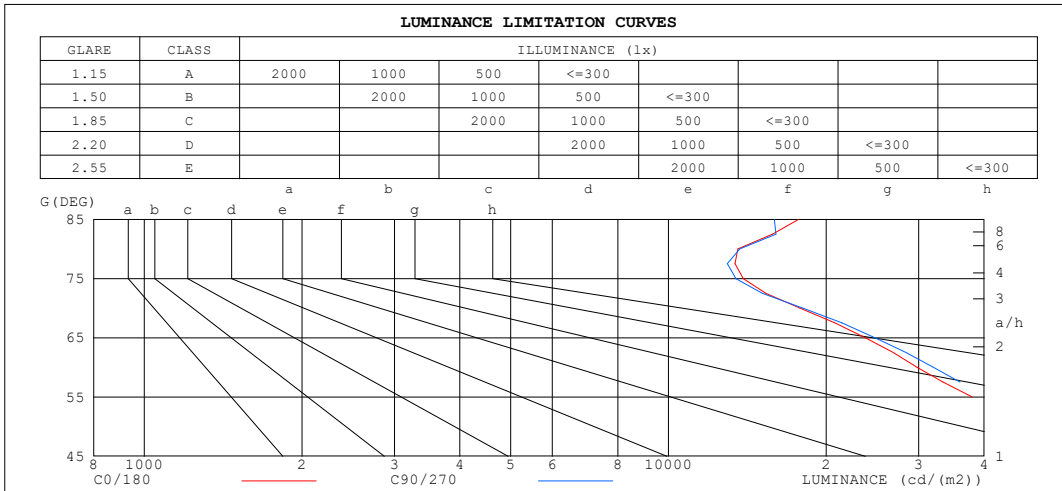
γ	C0	C45	C90	C135	C180	C225	C270	C315	γ	∅ zone	∅ total	%lum, lamp
10	329.1	325.4	318.8	314.2	311.1	314.2	318.8	325.4	0- 10	31.83	31.83	8.71,8.71
20	252.6	246.3	241.1	234.5	231.1	234.5	241.1	246.3	10- 20	79.10	110.9	30.4,30.4
30	163.6	156.5	160.3	145.1	145.0	145.1	160.3	156.5	20- 30	90.09	201.0	55,55
40	86.74	86.91	87.91	78.11	75.74	78.11	87.91	86.91	30- 40	72.38	273.4	74.8,74.8
50	40.86	44.04	43.08	39.44	35.99	39.44	43.08	44.04	40- 50	46.23	319.6	87.5,87.5
60	18.72	21.47	20.10	19.23	16.82	19.23	20.10	21.47	50- 60	25.98	345.6	94.6,94.6
70	7.655	8.770	7.752	7.332	6.474	7.332	7.752	8.770	60- 70	13.06	358.7	98.2,98.2
80	2.958	3.090	2.982	2.801	2.908	2.801	2.982	3.090	70- 80	5.008	363.7	99.5,99.5
90	0.0016	0.0020	0	0.0036	0	0.0036	0	0.0020	80- 90	1.658	365.3	100,100
100									90-100			
110									100-110			
120									110-120			
130									120-130			
140									130-140			
150									140-150			
160									150-160			
170									160-170			
180									170-180			
DEG	LUMINOUS INTENSITY:cd								UNIT:lm			

C Range: 0 - 180DEG
 C Interval: 15.0DEG
 Test Speed: MEDIUM
 Temperature:20°C
 Operators:NICK
 Test Date:12 October 2023

γ Range: 0 - 90DEG
 γ Interval: 2.5DEG
 Test System:EVERFINE GO-SPEX500_V1 SYSTEM V2.00.473
 Humidity:65.0%
 Test Distance:3.100m [K=1.0000]
 Remarks: AGL-300-30X60
 3W / 3000K / 60D / 300LM

LUMINANCE LIMITATION CURVES

Test:U:23.872V I:0.1389A P:3.3169W PF:1.0000 Freq:0Hz UTHDi:0.00% ITHDi:0.00% KDisp:0 Lamp Flux:365.327x1 lm		
NAME: AGL-300-30X60	TYPE: MR16 LAMP	WEIGHT: 100GM
SPEC.: AGL-300-30X60	DIM.: 50MM	SERIAL No.: -
MFR.: AQUALUX	SUR.:	Shielding Angle:



LUMINANCE cd/(m2)		
G (DEG)	C0/180	C90/270
85	17680	15924
80	13560	13672
75	13884	13443
70	17820	18045
65	23767	24802
60	29814	32013
55	37986	40698
50	50609	53364
45	67675	69957

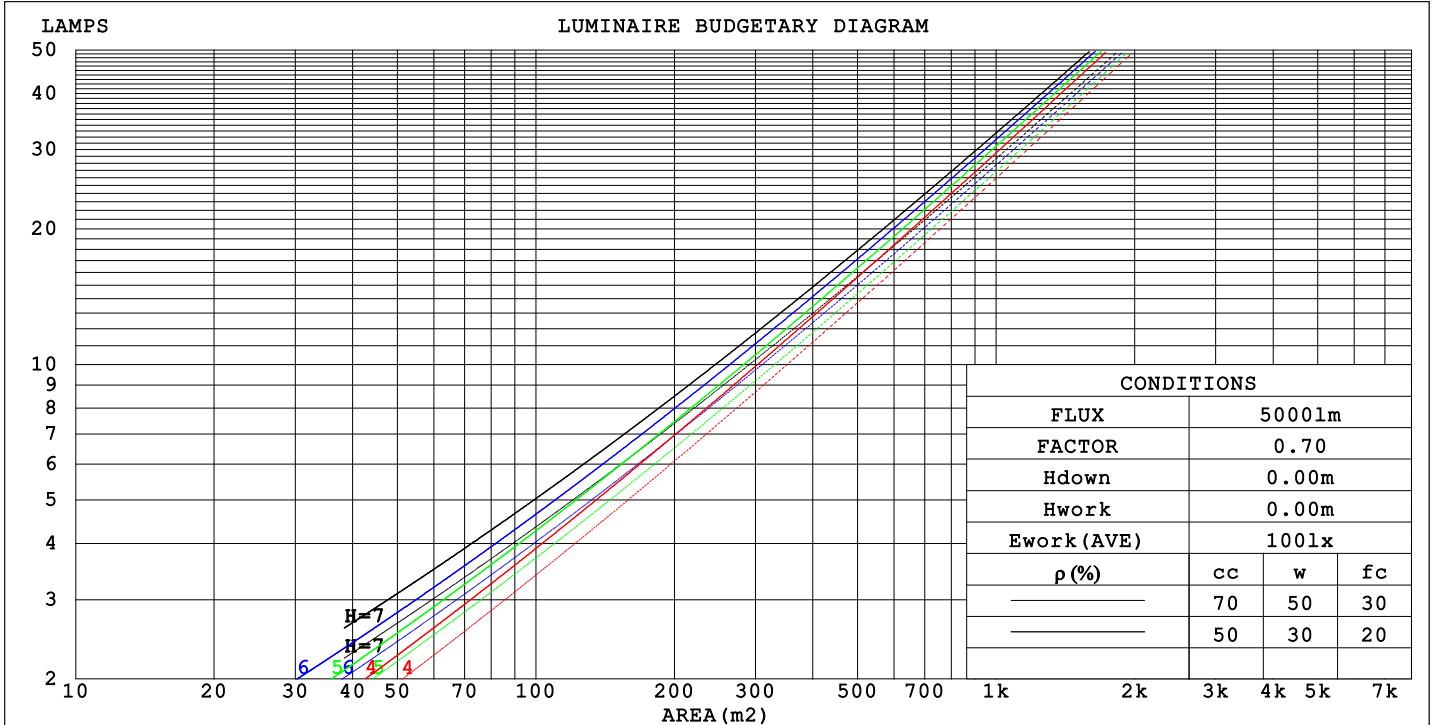
C Range: 0 - 180DEG
 C Interval: 15.0DEG
 Test Speed: MEDIUM
 Temperature: 20°C
 Operator: NICK
 Test Date: 12 October 2023

γ Range: 0 - 90DEG
 γ Interval: 2.5DEG
 Test System: EVERFINE GO-SPEX500_V1 SYSTEM V2.00.473
 Humidity: 65.0%
 Test Distance: 3.100m [K=1.0000]
 Remarks: AGL-300-30X60
 3W / 3000K / 60D / 300LM

CU AND LUMINAIRE BUDGETARY ESTIMATE DIAGRAM

Test:U:23.872V I:0.1389A P:3.3169W PF:1.0000 Freq:0Hz		
UTHDi:0.00% ITHDi:0.00% KDisp:0 Lamp Flux:365.327x1 lm		
NAME: AGL-300-30X60	TYPE: MR16 LAMP	WEIGHT: 100GM
SPEC.: AGL-300-30X60	DIM.: 50MM	SERIAL No.: -
MFR.: AQUALUX	SUR.:	Shielding Angle:

pcc	80%			70%			50%			30%			10%			0
	50%	30%	10%	50%	30%	10%	50%	30%	10%	50%	30%	10%	50%	30%	10%	
pw																
pfc	20%			20%			20%			20%			20%			0
RCR	RCR:Room Cavity Ratio															
	Coefficients of Utilization (CU)															
0.0	1.19	1.19	1.19	1.16	1.16	1.16	1.11	1.11	1.11	1.06	1.06	1.06	1.02	1.02	1.02	1.00
1.0	1.09	1.06	1.03	1.07	1.04	1.01	1.03	1.00	.98	.99	.97	.95	.95	.94	.93	.91
2.0	.99	.94	.90	.98	.93	.89	.94	.91	.87	.91	.88	.85	.88	.86	.84	.82
3.0	.91	.85	.80	.89	.84	.80	.87	.82	.78	.84	.80	.77	.82	.79	.76	.74
4.0	.84	.77	.72	.82	.76	.72	.80	.75	.71	.78	.74	.70	.76	.72	.69	.67
5.0	.77	.70	.65	.76	.70	.65	.74	.69	.64	.73	.68	.64	.71	.67	.63	.61
6.0	.72	.65	.60	.71	.64	.59	.69	.63	.59	.68	.62	.59	.66	.62	.58	.56
7.0	.67	.60	.55	.66	.59	.55	.64	.59	.54	.63	.58	.54	.62	.57	.54	.52
8.0	.62	.55	.51	.62	.55	.51	.60	.54	.50	.59	.54	.50	.58	.53	.50	.48
9.0	.58	.52	.47	.58	.51	.47	.57	.51	.47	.56	.50	.47	.55	.50	.46	.45
10.0	.55	.48	.44	.54	.48	.44	.53	.48	.44	.53	.47	.44	.52	.47	.43	.42



C Range: 0 - 180DEG
 C Interval: 15.0DEG
 Test Speed: MEDIUM
 Temperature: 20°C
 Operators: NICK
 Test Date: 12 October 2023

γ Range: 0 - 90DEG
 γ Interval: 2.5DEG
 Test System: EVERFINE GO-SPEX500_V1 SYSTEM V2.00.473
 Humidity: 65.0%
 Test Distance: 3.100m [K=1.0000]
 Remarks: AGL-300-30X60
 3W / 3000K / 60D / 300LM

WEC AND CCEC

Test:U:23.872V I:0.1389A P:3.3169W PF:1.0000 Freq:0Hz		
UTHDi:0.00% ITHDi:0.00% KDisp:0 Lamp Flux:365.327x1 lm		
NAME: AGL-300-30X60	TYPE: MR16 LAMP	WEIGHT: 100GM
SPEC.: AGL-300-30X60	DIM.: 50MM	SERIAL No.: -
MFR.: AQUALUX	SUR.:	Shielding Angle:

ρcc	80%			70%			50%			30%			10%			0
ρw	50%	30%	10%	50%	30%	10%	50%	30%	10%	50%	30%	10%	50%	30%	10%	0
ρfc	20%			20%			20%			20%			20%			0
RCR	RCR:Room Cavity Ratio						Wall Exitance Coefficients (WEC)									
0.0																
1.0	.215	.122	.039	.208	.119	.038	.195	.112	.036	.184	.106	.034	.173	.100	.032	
2.0	.206	.113	.035	.201	.111	.034	.190	.106	.033	.180	.101	.032	.170	.096	.030	
3.0	.196	.104	.031	.191	.102	.031	.181	.098	.030	.173	.095	.029	.164	.091	.028	
4.0	.185	.096	.028	.181	.094	.028	.172	.091	.027	.165	.088	.027	.157	.086	.026	
5.0	.175	.089	.026	.171	.088	.026	.164	.085	.025	.157	.083	.025	.150	.080	.024	
6.0	.165	.083	.024	.162	.082	.024	.155	.080	.023	.149	.078	.023	.144	.076	.022	
7.0	.156	.077	.022	.153	.076	.022	.148	.075	.021	.142	.073	.021	.137	.071	.021	
8.0	.148	.072	.020	.146	.072	.020	.140	.070	.020	.136	.069	.020	.131	.067	.020	
9.0	.141	.068	.019	.138	.067	.019	.134	.066	.019	.130	.065	.019	.126	.064	.018	
10.0	.134	.064	.018	.132	.064	.018	.128	.063	.018	.124	.062	.017	.120	.060	.017	

ρcc	80%			70%			50%			30%			10%			0
ρw	50%	30%	10%	50%	30%	10%	50%	30%	10%	50%	30%	10%	50%	30%	10%	0
ρfc	20%			20%			20%			20%			20%			0
RCR	RCR:Room Cavity Ratio						Ceiling Cavity Exitance Coefficients (CCEC)									
0.0	.190	.190	.190	.163	.163	.163	.111	.111	.111	.064	.064	.064	.020	.020	.020	
1.0	.174	.157	.142	.149	.135	.122	.102	.093	.084	.059	.054	.049	.019	.017	.016	
2.0	.161	.132	.108	.138	.114	.094	.094	.079	.065	.054	.046	.038	.017	.015	.012	
3.0	.150	.114	.085	.129	.098	.074	.088	.068	.052	.051	.040	.030	.016	.013	.010	
4.0	.141	.100	.068	.121	.086	.059	.083	.060	.042	.048	.035	.025	.015	.011	.008	
5.0	.133	.088	.055	.114	.076	.048	.079	.053	.034	.046	.031	.020	.015	.010	.007	
6.0	.126	.079	.046	.108	.069	.040	.075	.048	.028	.043	.028	.017	.014	.009	.006	
7.0	.119	.072	.039	.103	.063	.034	.071	.044	.024	.041	.026	.014	.013	.008	.005	
8.0	.114	.066	.033	.098	.057	.029	.068	.040	.021	.039	.024	.012	.013	.008	.004	
9.0	.108	.061	.029	.093	.053	.025	.065	.037	.018	.038	.022	.011	.012	.007	.004	
10.0	.103	.057	.026	.089	.049	.022	.062	.035	.016	.036	.020	.009	.012	.007	.003	

C Range: 0 - 180DEG
 C Interval: 15.0DEG
 Test Speed: MEDIUM
 Temperature:20°C
 Operators:NICK
 Test Date:12 October 2023

γ Range: 0 - 90DEG
 γ Interval: 2.5DEG
 Test System:EVERFINE GO-SPEX500_V1 SYSTEM V2.00.473
 Humidity:65.0%
 Test Distance:3.100m [K=1.0000]
 Remarks: AGL-300-30X60
 3W / 3000K / 60D / 300LM

UGR(Unified Glare Rating) Table

Test:U:23.872V I:0.1389A P:3.3169W PF:1.0000 Freq:0Hz		
UTHDi:0.00% ITHDi:0.00% KDisp:0 Lamp Flux:365.327x1 lm		
NAME: AGL-300-30X60	TYPE: MR16 LAMP	WEIGHT: 100GM
SPEC.: AGL-300-30X60	DIM.: 50MM	SERIAL No.: -
MFR.: AQUALUX	SUR.:	Shielding Angle:

ceiling/cavity	0.7	0.7	0.5	0.5	0.3	0.7	0.7	0.5	0.5	0.3
walls	0.5	0.3	0.5	0.3	0.3	0.5	0.3	0.5	0.3	0.3
working plane	0.2	0.2	0.2	0.2	0.2	0.2	0.2	0.2	0.2	0.2

Room dimensions		Viewed crosswise					Viewed endwise						
x =	2H	y =	2H	27.7	28.8	27.9	29.0	29.2	27.8	28.9	28.0	29.1	29.3
			3H	27.9	29.0	28.2	29.2	29.4	28.1	29.1	28.3	29.3	29.5
			4H	28.0	29.0	28.3	29.2	29.4	28.1	29.1	28.4	29.3	29.6
			6H	28.0	29.0	28.3	29.2	29.5	28.1	29.1	28.4	29.3	29.6
			8H	28.1	29.0	28.4	29.2	29.5	28.2	29.1	28.5	29.3	29.6
			12H	28.1	29.0	28.4	29.2	29.5	28.2	29.1	28.5	29.3	29.6
	4H		2H	27.8	28.8	28.1	29.0	29.3	27.9	28.9	28.2	29.2	29.4
			3H	28.2	29.1	28.5	29.3	29.6	28.3	29.2	28.6	29.4	29.7
			4H	28.3	29.1	28.7	29.4	29.7	28.4	29.2	28.7	29.5	29.8
			6H	28.4	29.1	28.8	29.4	29.8	28.5	29.2	28.9	29.5	29.8
			8H	28.5	29.1	28.9	29.5	29.9	28.6	29.2	29.0	29.6	29.9
			12H	28.6	29.2	29.0	29.5	29.9	28.6	29.2	29.0	29.6	30.0
	8H		4H	28.3	28.9	28.7	29.3	29.7	28.4	29.0	28.8	29.4	29.7
			6H	28.5	29.0	28.9	29.4	29.8	28.5	29.1	29.0	29.5	29.9
			8H	28.6	29.1	29.1	29.5	30.0	28.7	29.2	29.2	29.6	30.0
			12H	28.8	29.2	29.3	29.6	30.1	28.8	29.2	29.3	29.7	30.1
	12H		4H	28.3	28.8	28.7	29.2	29.6	28.3	28.9	28.7	29.3	29.7
			6H	28.5	28.9	28.9	29.4	29.8	28.5	29.0	29.0	29.4	29.9
			8H	28.7	29.1	29.2	29.5	30.0	28.7	29.1	29.2	29.6	30.1

Variations with the observer position at spacings(CIE Pub.117):		
S = 1.0H	+ 0.9 / - 1.4	+ 1.0 / - 1.3
1.5H	+ 1.1 / - 0.9	+ 1.1 / - 0.9
2.0H	+ 1.7 / - 1.4	+ 1.9 / - 1.3

CIE Pub.117, 365.3 lm Total Lamp Luminous Flux Correct (8log(F/F0) = -3.5)
 Area: 0.001256 m2

C Range: 0 - 180DEG
 C Interval: 15.0DEG
 Test Speed: MEDIUM
 Temperature:20°C
 Operators:NICK
 Test Date:12 October 2023

γ Range: 0 - 90DEG
 γ Interval: 2.5DEG
 Test System:EVERFINE GO-SPEX500_V1 SYSTEM V2.00.473
 Humidity:65.0%
 Test Distance:3.100m [K=1.0000]
 Remarks: AGL-300-30X60
 3W / 3000K / 60D / 300LM

UTILIZATION FACTORS TABLE

Test:U:23.872V I:0.1389A P:3.3169W PF:1.0000 Freq:0Hz		
UTHDi:0.00% ITHDi:0.00% KDisp:0 Lamp Flux:365.327x1 lm		
NAME: AGL-300-30X60	TYPE: MR16 LAMP	WEIGHT: 100GM
SPEC.: AGL-300-30X60	DIM.: 50MM	SERIAL No.: -
MFR.: AQUALUX	SUR.:	Shielding Angle:

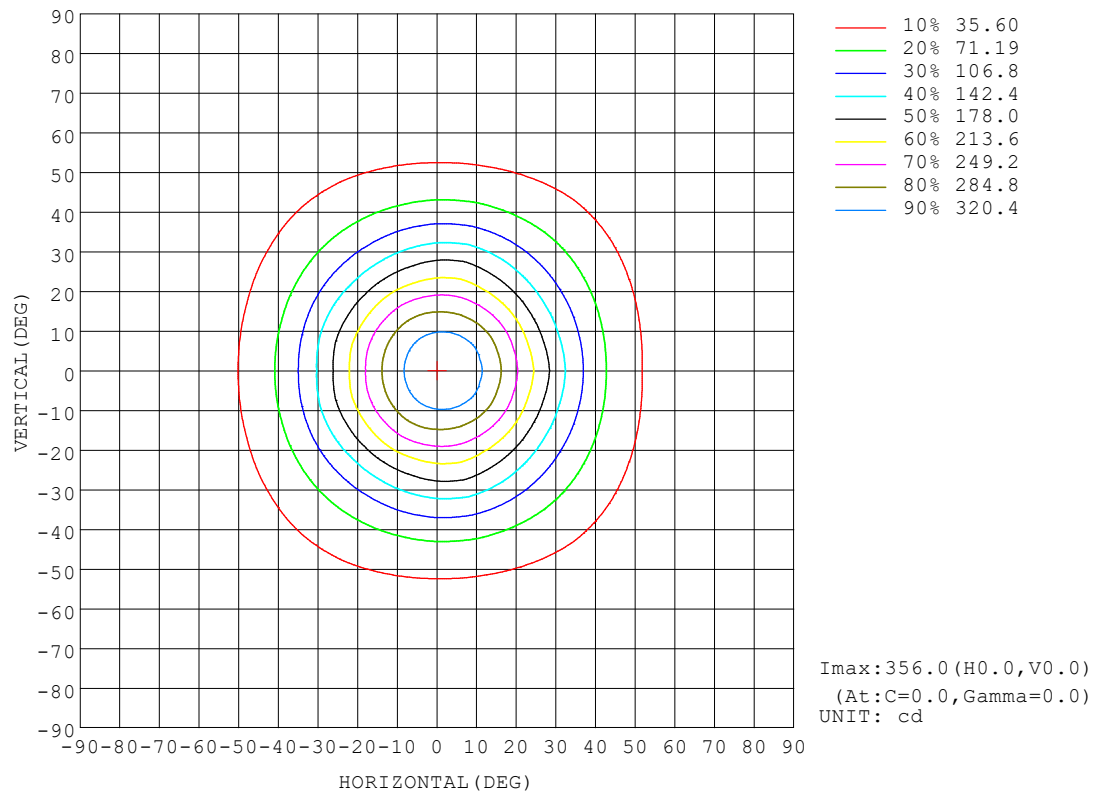
REFLECTANCE										
Ceiling	0.8	0.8	0.8	0.7	0.7	0.7	0.5	0.5	0.5	0
Walls	0.7	0.5	0.3	0.7	0.5	0.3	0.7	0.5	0.3	0
Working plane	0.2	0.2	0.2	0.2	0.2	0.2	0.2	0.2	0.2	0
ROOM INDEX	UTILIZATION FACTORS (PERCENT) k(RI) x RCR = 5									
k = 0.60	76	67	62	75	67	62	74	67	62	57
0.80	85	77	71	84	76	71	82	75	71	66
1.00	91	83	78	90	83	78	88	83	78	73
1.25	96	89	85	95	89	84	93	87	83	78
1.50	100	93	89	99	93	88	96	91	87	82
2.00	104	99	94	103	98	94	100	95	92	86
2.50	107	102	98	105	100	97	102	98	95	88
3.00	109	104	101	107	103	100	103	100	97	90
4.00	111	108	105	109	106	103	105	103	101	93
5.00	113	110	107	111	108	106	107	104	103	94
ROOM INDEX	UF(total)									Direct
According to DIN EN 13032-2 2004			Suspended				SHRNOM = 1.25			

C Range: 0 - 180DEG
 C Interval: 15.0DEG
 Test Speed: MEDIUM
 Temperature:20°C
 Operators:NICK
 Test Date:12 October 2023

γ Range: 0 - 90DEG
 γ Interval: 2.5DEG
 Test System:EVERFINE GO-SPEX500_V1 SYSTEM V2.00.473
 Humidity:65.0%
 Test Distance:3.100m [K=1.0000]
 Remarks: AGL-300-30X60
 3W / 3000K / 60D / 300LM

ISOCANDELA DIAGRAM

Test:U:23.872V I:0.1389A P:3.3169W PF:1.0000 Freq:0Hz UTHDi:0.00% ITHDi:0.00% KDisp:0 Lamp Flux:365.327x1 lm		
NAME: AGL-300-30X60	TYPE: MR16 LAMP	WEIGHT: 100GM
SPEC.: AGL-300-30X60	DIM.: 50MM	SERIAL No.: -
MFR.: AQUALUX	SUR.:	Shielding Angle:

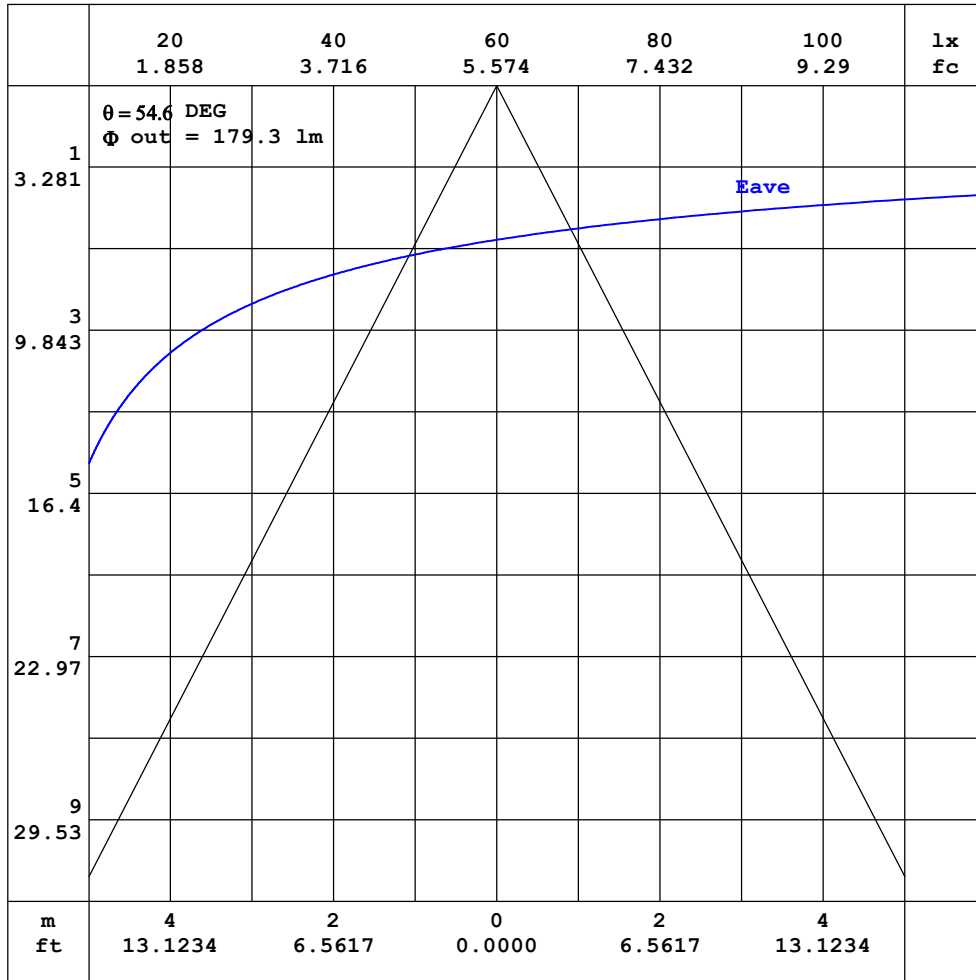


C Range: 0 - 180DEG
 C Interval: 15.0DEG
 Test Speed: MEDIUM
 Temperature:20°C
 Operators:NICK
 Test Date:12 October 2023

γ Range: 0 - 90DEG
 γ Interval: 2.5DEG
 Test System:EVERFINE GO-SPEX500_V1 SYSTEM V2.00.473
 Humidity:65.0%
 Test Distance:3.100m [K=1.0000]
 Remarks: AGL-300-30X60
 3W / 3000K / 60D / 300LM

AAI CURVES

Test:U:23.872V I:0.1389A P:3.3169W PF:1.0000 Freq:0Hz		
UTHDi:0.00% ITHDi:0.00% KDisp:0 Lamp Flux:365.327x1 lm		
NAME: AGL-300-30X60	TYPE: MR16 LAMP	WEIGHT: 100GM
SPEC.: AGL-300-30X60	DIM.: 50MM	SERIAL No.: -
MFR.: AQUALUX	SUR.:	Shielding Angle:



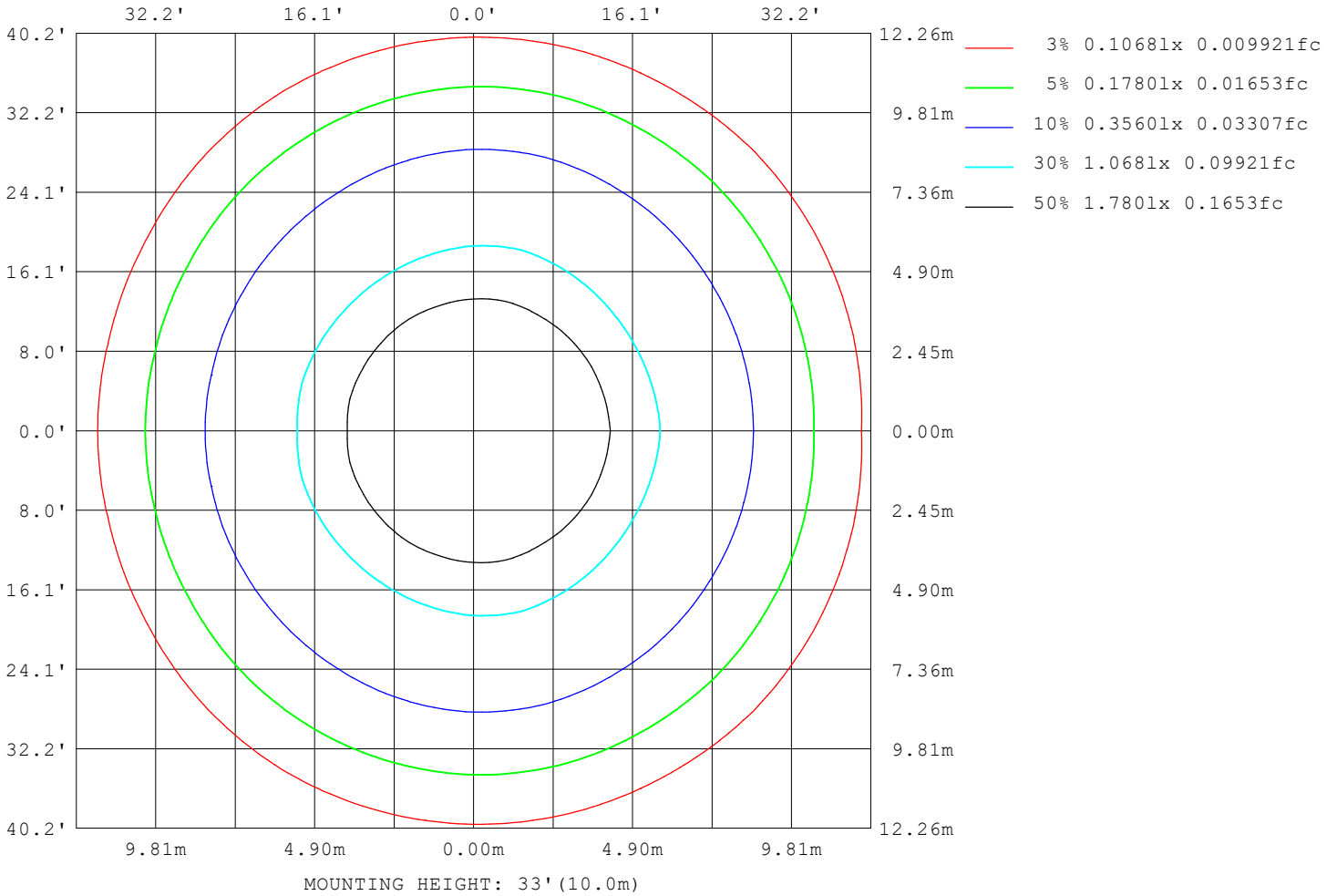
Note: The Curves indicate the illuminated area and the average illumination when the luminaire is at different distance.

C Range: 0 - 180DEG
 C Interval: 15.0DEG
 Test Speed: MEDIUM
 Temperature: 20°C
 Operators: NICK
 Test Date: 12 October 2023

γ Range: 0 - 90DEG
 γ Interval: 2.5DEG
 Test System: EVERFINE GO-SPEX500_V1 SYSTEM V2.00.473
 Humidity: 65.0%
 Test Distance: 3.100m [K=1.0000]
 Remarks: AGL-300-30X60
 3W / 3000K / 60D / 300LM

ISOLUX DIAGRAM

Test:U:23.872V I:0.1389A P:3.3169W PF:1.0000 Freq:0Hz UTHDi:0.00% ITHDi:0.00% KDisp:0 Lamp Flux:365.327x1 lm		
NAME: AGL-300-30X60	TYPE: MR16 LAMP	WEIGHT: 100GM
SPEC.: AGL-300-30X60	DIM.: 50MM	SERIAL No.: -
MFR.: AQUALUX	SUR.:	Shielding Angle:



C Range: 0 - 180DEG
 C Interval: 15.0DEG
 Test Speed: MEDIUM
 Temperature: 20°C
 Operators: NICK
 Test Date: 12 October 2023

γ Range: 0 - 90DEG
 γ Interval: 2.5DEG
 Test System: EVERFINE GO-SPEX500_V1 SYSTEM V2.00.473
 Humidity: 65.0%
 Test Distance: 3.100m [K=1.0000]
 Remarks: AGL-300-30X60
 3W / 3000K / 60D / 300LM

LED Avg.L Report

Test:U:23.872V I:0.1389A P:3.3169W PF:1.0000 Freq:0Hz UTHDi:0.00% ITHDi:0.00% KDisp:0 Lamp Flux:365.327x1 lm		
NAME: AGL-300-30X60	TYPE: MR16 LAMP	WEIGHT: 100GM
SPEC.: AGL-300-30X60	DIM.: 50MM	SERIAL No.: -
MFR.: AQUALUX	SUR.:	Shielding Angle:

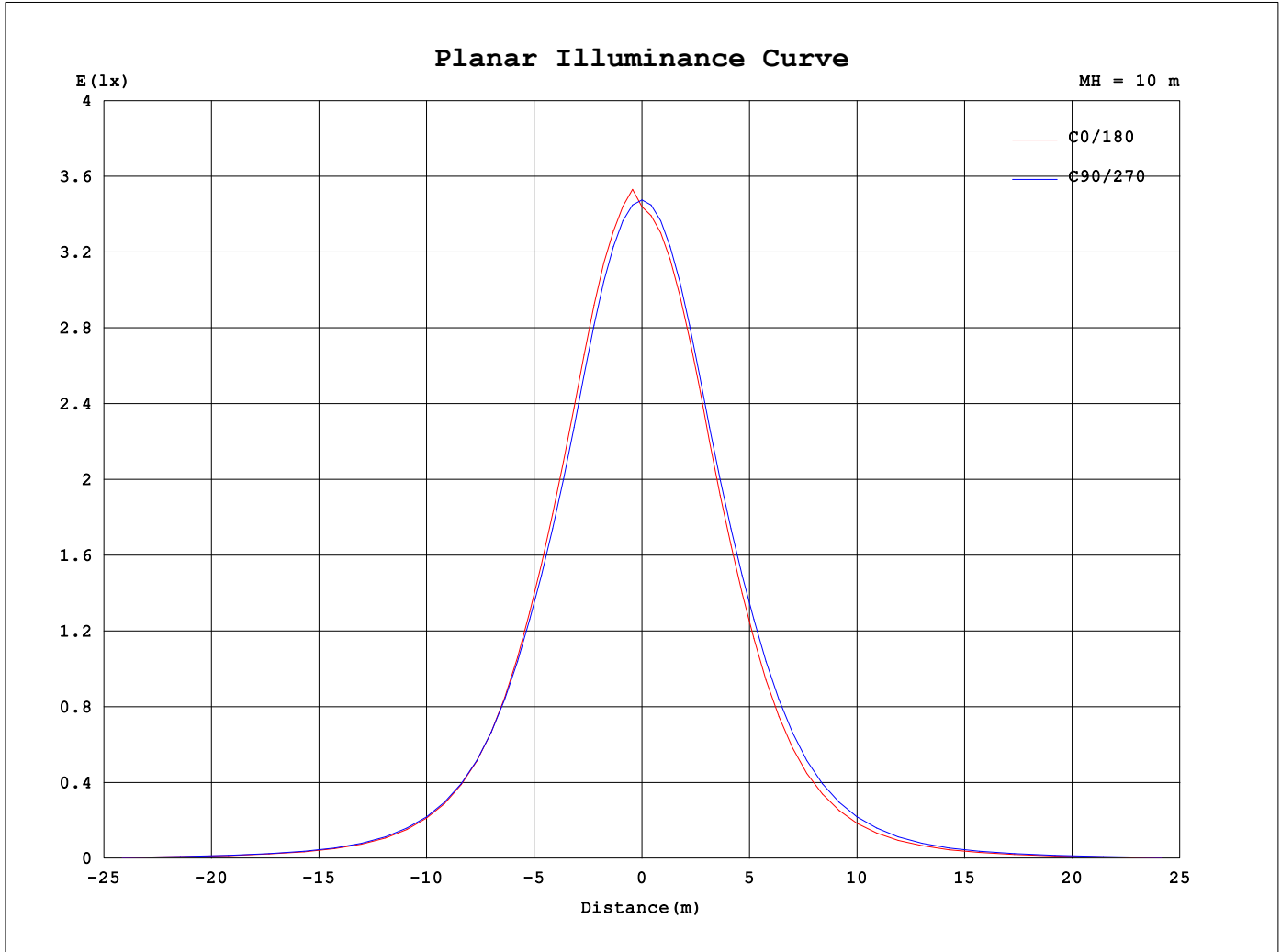
AvgL	cd/m2
L_0~180 (65) av	22236
L_0~180 (75) av	13010
L_0~180 (85) av	14427
L_90~270 (65) av	24802
L_90~270 (75) av	13443
L_90~270 (85) av	15924
L_45 (65) av	25393
L_45 (75) av	13924
L_45 (85) av	15251

Standard: GB/T 29293-2012

C Range: 0 - 180DEG
 C Interval: 15.0DEG
 Test Speed: MEDIUM
 Temperature:20°C
 Operators:NICK
 Test Date:12 October 2023

γ Range: 0 - 90DEG
 γ Interval: 2.5DEG
 Test System:EVERFINE GO-SPEX500_V1 SYSTEM V2.00.473
 Humidity:65.0%
 Test Distance:3.100m [K=1.0000]
 Remarks: AGL-300-30X60
 3W / 3000K / 60D / 300LM

Planar Illuminance Curve

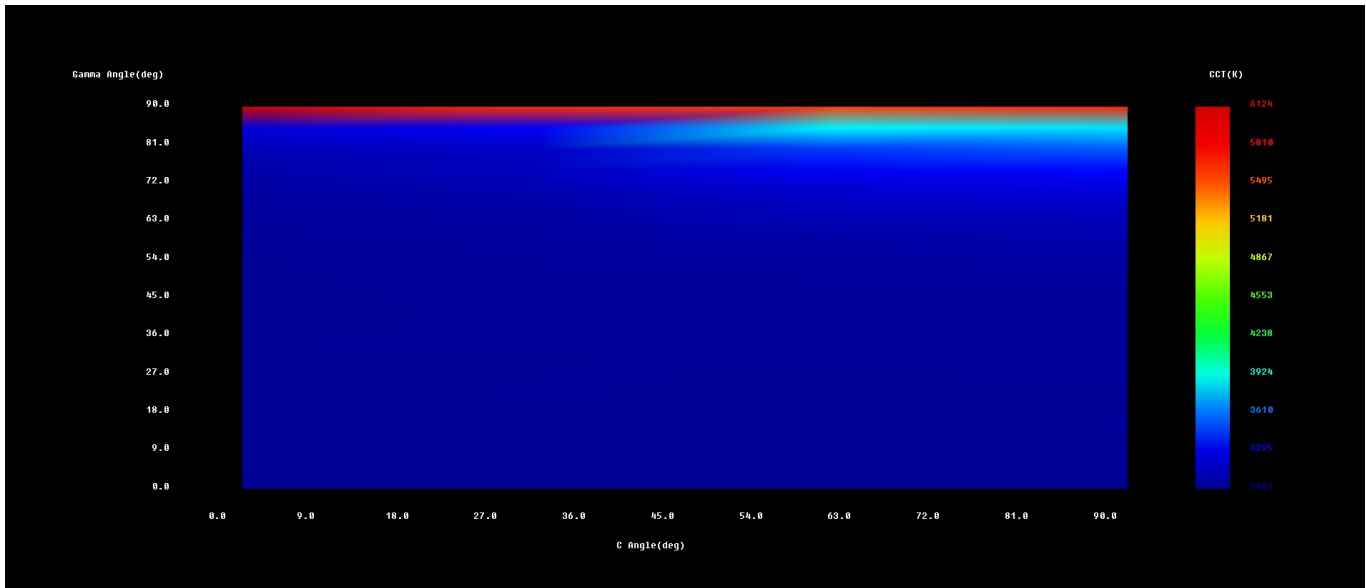


C Range: 0 - 180DEG
 C Interval: 15.0DEG
 Test Speed: MEDIUM
 Temperature: 20°C
 Operator: NICK
 Test Date: 12 October 2023

γ Range: 0 - 90DEG
 γ Interval: 2.5DEG
 Test System: EVERFINE GO-SPEX500_V1 SYSTEM V2.00.473
 Humidity: 65.0%
 Test Distance: 3.100m [K=1.0000]
 Remarks: AGL-300-30X60
 3W / 3000K / 60D / 300LM

Spatial Color Distribution Report

NAME: AGL-300-30X60	TYPE: MR16 LAMP	WEIGHT: 100GM
DIM.: 50MM	SPEC.: AGL-300-30X60	SERIAL No.: -
MFR.: AQUALUX		



Color Parameters:

Average: x=0.4347,y=0.3988 u'=0.2514,v'=0.5189 CCT=2994K Ra=81.7 Rf=83 Rg=97
Center : x=0.4349,y=0.3985 u'=0.2517,v'=0.5189 CCT=2989K Ra=81.4 Rf=82 Rg=97
IESNA LM-79-2019 Max. du'v': 0.0016 / max.du'v': 0.0000[Set Range]
GB/T 24824(LB/T 001-2009):: avg. color nonuniformity du'v':0.0002
GB/T 24824(LB/T 001-2009):: max. color nonuniformity du'v':0.0007
Average: R1=80 R2=90 R3=96 R4=80 R5=80 R6=88 R7=82 R8=57 R9=3 R10=78
R11=79 R12=73 R13=82 R14=98 R15=73

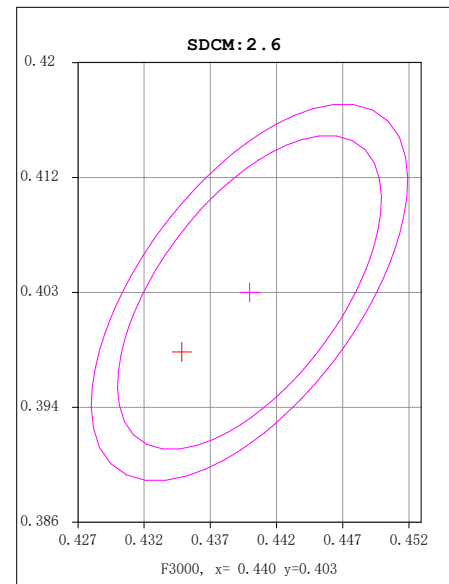
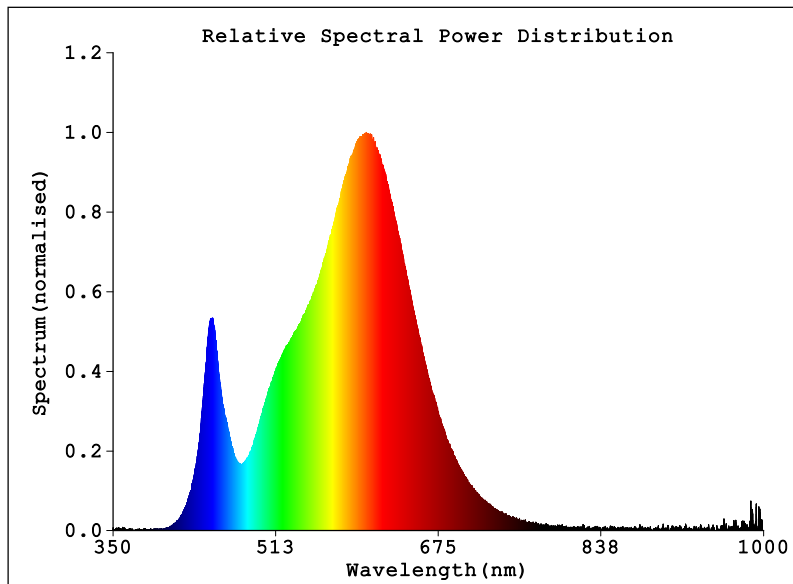
Tester: NICK
Temperature: 20°C
Manufacturer: AQUALUX

Date: 12 October 2023
Humidity: 65.0%
Remarks: AGL-300-30X603W / 3000K / 60D / 300LM

System: GO-SPEX500_V1

Spectral Radiant Test Report

NAME: AGL-300-30X60	TYPE: MR16 LAMP	WEIGHT: 100GM
DIM.: 50MM	SPEC.: AGL-300-30X60	SERIAL No.: -
MFR.: AQUALUX		



Photon & Colormetric & Photometric Quantities:

Chromaticity Coordinates: $x=0.4349$ $y=0.3985/u'=0.2517$ $v'=0.5189$ $duv=-0.00196$

$T_c=2989K$ Dominant WL: $L_d=583.6nm$ Purity=50.1%

Ratio: R=22.9% G=74.6% B=2.4% Peak WL: $L_p=603.0nm$ HWL: 122.6nm

Rendering Index: $R_a=81.4$ TM-30: $R_f=82$ $R_g=97$

R1 =80 R2 =90 R3 =96 R4 =79 R5 =80 R6 =88 R7 =81

R8 =57 R9 =2 R10=77 R11=79 R12=73 R13=82 R14=98 R15=72

$E = 35.29$ lx $E_e = 0.1080$ W/m²

Status: $T=1728.00ms$ $I_p=55935$ (85%) [HAAS-1200(CAN)]

Electrical: $U=23.872V$ $I=0.13861A$ $P=3.309W$ $PF=1.0000$

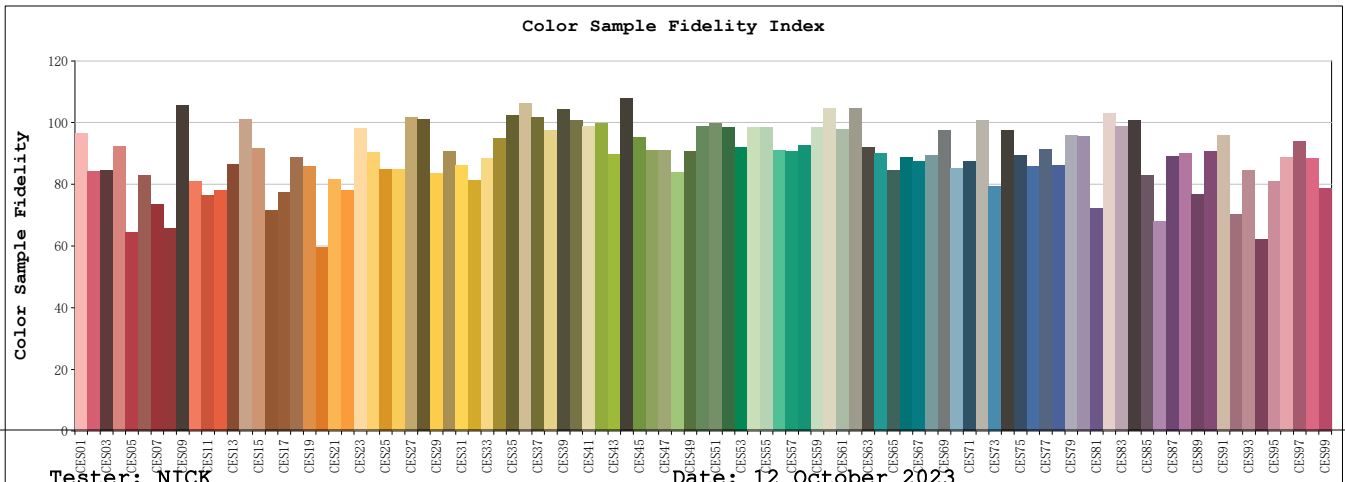
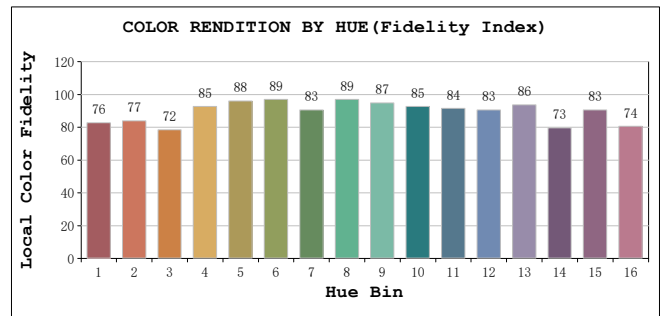
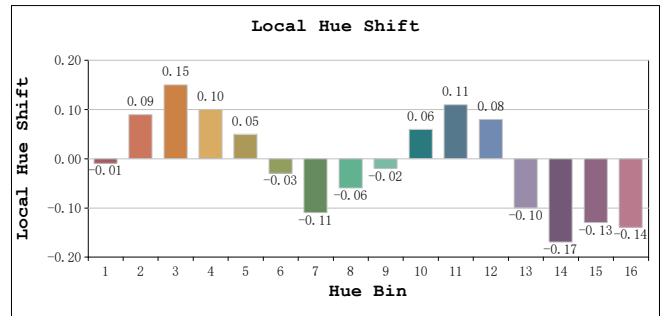
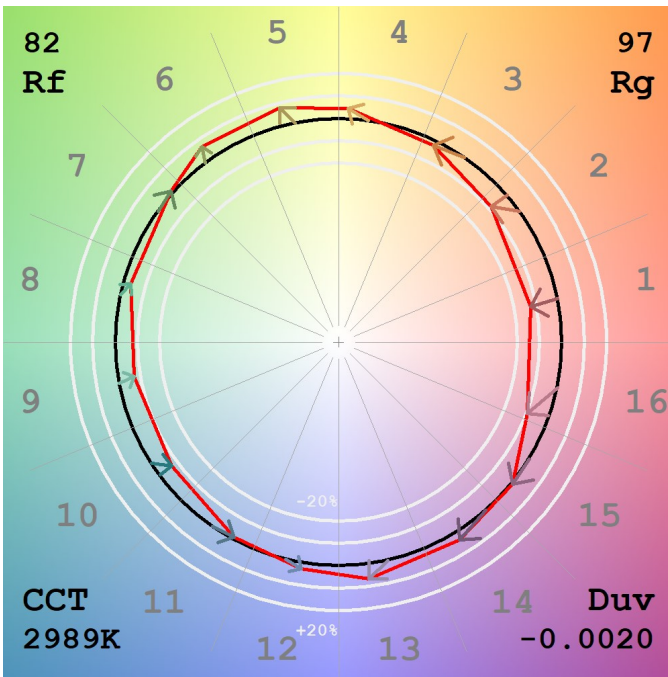
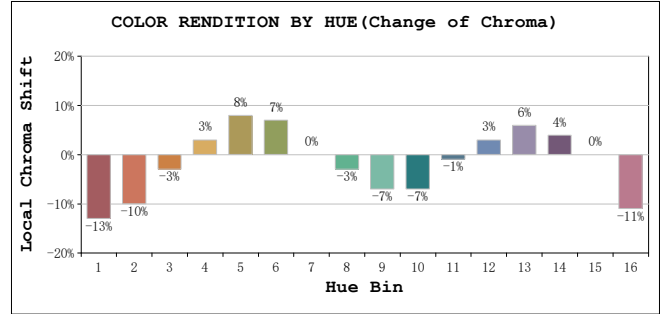
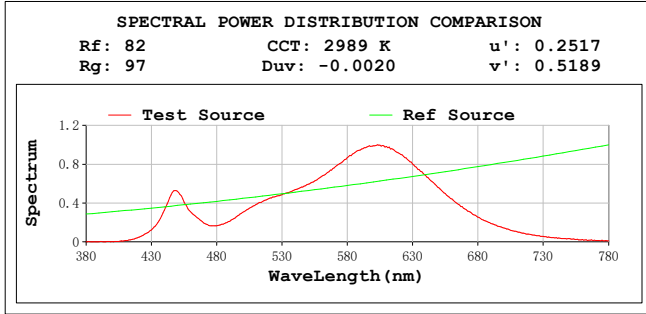
Test position: Center

Tester: NICK
 Temperature: 20°C
 Manufacturer: AQUALUX

Date: 12 October 2023
 Humidity: 65.0%
 Remarks: AGL-300-30X603W / 3000K / 60D / 300LM

System: GO-SPEX500_V1

TM30



All Rf:

Rf1 = 88.5	Rf2 = 77.2	Rf3 = 77.4
Rf4 = 84.6	Rf5 = 59.0	Rf6 = 75.9
Rf7 = 67.6	Rf8 = 60.4	Rf9 = 96.9
Rf10 = 74.4	Rf11 = 70.0	Rf12 = 71.6
Rf13 = 79.4	Rf14 = 92.9	Rf15 = 84.0
Rf16 = 65.7	Rf17 = 70.8	Rf18 = 81.6
Rf19 = 78.7	Rf20 = 54.7	Rf21 = 75.0
Rf22 = 71.6	Rf23 = 90.1	Rf24 = 82.7
Rf25 = 77.8	Rf26 = 77.9	Rf27 = 93.2
Rf28 = 92.6	Rf29 = 76.6	Rf30 = 83.1
Rf31 = 79.0	Rf32 = 74.7	Rf33 = 81.1
Rf34 = 87.1	Rf35 = 93.8	Rf36 = 97.6
Rf37 = 93.4	Rf38 = 89.5	Rf39 = 95.7
Rf40 = 92.3	Rf41 = 90.5	Rf42 = 91.5
Rf43 = 82.2	Rf44 = 98.8	Rf45 = 87.2
Rf46 = 83.6	Rf47 = 83.4	Rf48 = 76.9
Rf49 = 83.1	Rf50 = 90.6	Rf51 = 91.6
Rf52 = 90.1	Rf53 = 84.5	Rf54 = 90.4
Rf55 = 90.3	Rf56 = 83.5	Rf57 = 83.1
Rf58 = 84.9	Rf59 = 90.2	Rf60 = 95.9
Rf61 = 89.6	Rf62 = 96.0	Rf63 = 84.5
Rf64 = 82.6	Rf65 = 77.6	Rf66 = 81.5
Rf67 = 80.1	Rf68 = 81.9	Rf69 = 89.4
Rf70 = 78.2	Rf71 = 80.3	Rf72 = 92.2
Rf73 = 72.9	Rf74 = 89.4	Rf75 = 81.9
Rf76 = 78.6	Rf77 = 83.8	Rf78 = 79.0
Rf79 = 88.1	Rf80 = 87.5	Rf81 = 66.3
Rf82 = 94.5	Rf83 = 90.6	Rf84 = 92.3
Rf85 = 75.9	Rf86 = 62.4	Rf87 = 81.9
Rf88 = 82.6	Rf89 = 70.4	Rf90 = 83.2
Rf91 = 88.0	Rf92 = 64.6	Rf93 = 77.6
Rf94 = 57.1	Rf95 = 74.4	Rf96 = 81.3
Rf97 = 86.3	Rf98 = 81.3	Rf99 = 72.3

Tester: NICK
Temperature: 20°C
Manufacturer: AQUALUX

Date: 12 October 2023
Humidity: 65.0%
Remarks: AGL-300-30X603W / 3000K / 60D / 300LM

System: GO-SPEX500_V1

